

# AQUABACTERIUM SILICAE SP. NOV., ISOLATED FROM A DEEP AQUIFER

M. BOURRAIN<sup>1</sup>, A. CALVEZ<sup>1</sup>, M.T. SUZUKI<sup>2</sup>, C. VILLETTE<sup>1</sup>, P. LEBARON<sup>2\*</sup>

<sup>1</sup> Pierre Fabre Dermo-Cosmétique et Personal Care, 31000 Toulouse, France

<sup>2</sup> Sorbonne Université, CNRS, Laboratoire de Biodiversité et Biotechnologies Microbiennes, LBBM, Observatoire Océanologique, 66650 Banyuls-sur-mer, France

\* Corresponding author: lebaron@obs-banyuls.fr

AQUABACTERIUM SILICAE  
DEEP AQUIFER  
BURKHOLDERIALES

**ABSTRACT.** – A novel mesophilic chemoheterotrophic bacterial strain designated LMB275<sup>T</sup>, that grows under aerobic/microaerophilic conditions, was isolated from the thermal spring water of a deep aquifer in France. Cells were oxidase-positive and catalase-negative, with a polar flagellum. Phylogenetic analyses based on 16S rRNA gene sequences suggested that strain LMB275<sup>T</sup> belongs to the genus *Aquabacterium*, and most closely related to *Aquabacterium parvum* B6<sup>T</sup> (99.1 %), *Aquabacterium commune* B8<sup>T</sup> (97.9 %) and *Aquabacterium citratiphilum* B4<sup>T</sup> (97.0 %). The DNA-DNA relatedness between strain LMB275<sup>T</sup> and *A. parvum* was below 70.0 %. The DNA G+C content was 66 mol %. The fatty acid composition differed from all other species of the genus with the dominance of C<sub>18:1</sub>ω9c. The polar lipids consisted of phosphatidylethanolamine as the major component, phosphatidylglycerol, diphosphatidylglycerol and several uncharacterized phospholipids. The strain was not able to assimilate all the carbohydrates tested and used different inorganic electron acceptors. Based on the physiological, chemotaxonomic and phylogenetic analyses, and the low level of DNA relatedness with the closest phylogenetic relative *A. parvum*, it can be concluded that the strain LMB275<sup>T</sup> represents a new species of the genus *Aquabacterium*, for which the name *Aquabacterium silicae* sp. nov. is proposed. The type strain of *A. silicae* is LMB275<sup>T</sup> (CNCM I-5858).

## INTRODUCTION

The deep continental groundwaters harbour characteristic natural microbial communities with specific phylogenetic compositions and special physiological capabilities, and a large part corresponds to undescribed microorganisms that still await isolation (Konno *et al.* 2013, Ino *et al.* 2016, Lopez-Fernandez *et al.* 2018, Savio *et al.* 2018, Bourrain *et al.* 2020). In these oligotrophic ecosystems where they have to cope with the absence of light and easily available organic carbon, they display metabolic lifestyles organized around inorganic resources and small concentrations of refractory dissolved organic matter that surround them (Hoehler & Jørgensen 2013, Lesaulnier *et al.* 2017). Chemolithotrophic (autotrophic and heterotrophic) metabolisms using inorganic compounds as electron sources, inorganic carbon fixation as well as dissolved organic matter for carbon assimilation, are thus particularly relevant to develop or subsist in these habitats and were reported in numerous studies (Griebler & Lueders 2009, Fukuda *et al.* 2010, Wu *et al.* 2016, Kumar *et al.* 2018a). How chemolithoautotrophic and heterotrophic organisms live together and interplay with their physicochemical environment are still pending issues, and their isolation and the investigation of their physiological and metabolic capacities would be very helpful to answer these questions. This report describes the characterization of a novel bacterium affiliated to the genus *Aquabacte-*

*rium*, LMB275<sup>T</sup> (= CNCM I-5858), isolated from thermal spring water that has long been investigated for the singularity and the remarkable stability its microbial composition (Bourrain *et al.* 2012, 2020).

The genus *Aquabacterium*, within the order Burkholderiales in the Betaproteobacteria class, was proposed by Kalmbach *et al.* (1999) with the description of three species, *A. parvum*, *A. citratiphilum*, and *A. commune* as the type species. The description of the genus has been emended by Chen *et al.* (2012), and more recently by Hirose *et al.* (2020). It now contains ten species with the further description of *A. fontiphilum* (Lin *et al.* 2009), *A. limnoticum* (Chen *et al.* 2012), *A. olei* (Pham *et al.* 2015), *A. tepidiphilum* (Khan *et al.* 2019), *A. pictum* (Hirose *et al.* 2020), *A. lacunae* (Chen *et al.* 2020), and lastly, *A. terrae*, the most recently described species but not validated at the time of writing (Dahal *et al.* 2021). Most of the type strains were isolated from freshwater ecosystems, except for *A. olei* and *A. terrae*, which originate from soils. Members of the genus *Aquabacterium* are characterized as Gram-negative, oxidase-positive, and non-spore-forming rods, most of them are motile using a monotrichous flagellum, and the presence of polyalkanoate and polyphosphate inclusion bodies were reported for *A. parvum*, *A. commune*, *A. citratiphilum* and *A. tepidiphilum*. *Aquabacterium pictum* is the only bacteriochlorophyll *a*-containing *Aquabacterium* species to date and

could be classified among the aerobic anoxygenic phototrophic bacteria (Hirose *et al.* 2020).

## MATERIALS AND METHODS

**Bacterial strains of the study:** Strain LMB275<sup>T</sup> was isolated from thermal spring water collected at the catchment point of a deep aquifer (180 meters deep) located in the north of the Hérault department in France at the eastern end of the “Montagne Noire” mountain. The water temperature at the catchment point is constant at 21° C and the chemical composition is controlled by the solubility of minerals (dolomite and quartz), which gives it weak mineralization (conductivity 475  $\mu\text{S cm}^{-1}$ , pH 7.5), dominated by bicarbonate (271.5 mg l<sup>-1</sup>), Ca<sup>2+</sup> (51.3 mg l<sup>-1</sup>) and Mg<sup>2+</sup> (26.7 mg l<sup>-1</sup>) (Lions 2020). The water sample was taken in July 2007 and was immediately filtered through a 0.22  $\mu\text{m}$  pore size polycarbonate filter. The filter was laid on a R3A agar plate (Reasoner & Geldreich 1985) and incubated for 10 days at 25° C. A bacterial strain, named LMB275<sup>T</sup> was isolated and purified from a colony that had developed and was stored at -80° C in R3A broth with 35 % (v/v) glycerol or 5 % DMSO. For detailed taxonomic description, the strain LMB275<sup>T</sup> was sub-cultured in a modified R2A medium where starch was replaced by 0.1 % (v/v) Tween 80 (Sigma) to improve the growth as recommended by Kalmbach *et al.* (1999).

For biochemical capacities, growth, or genomic studies, the reference strains *Aquabacterium parvum* B6<sup>T</sup> (DSM 11968), *Aquabacterium commune* B8<sup>T</sup> (DSM 11901), and *Aquabacterium citratiphilum* B4<sup>T</sup> (DSM 11900) were evaluated together with strain LMB275<sup>T</sup>. These strains were obtained from the Deutsche Sammlung von Mikroorganismen und Zellkulturen (DSMZ, Leibniz Institut, Germany).

**Transmission electron microscopy:** Transmission electron micrographs of negatively stained cells (Raguénès *et al.* 1997) were performed from exponential-phase cultures in modified R2A broth to determine the morphological characteristics of strain LMB275<sup>T</sup>.

To investigate the capability to form polyalkanoate inclusion bodies, thin sections of cells from exponential phase cultures in R2A broth were prepared as described by Derelle *et al.* (2008) with some modifications: fixation was done for 16 h at 4° C with 2.5 % glutaraldehyde prepared in 0.1 M cacodylate buffer and post-fixation was carried out with 1 % OsO<sub>4</sub> in 0.1 M cacodylate. Thin sections were stained with uranyl acetate and lead citrate before examination on a 7500 Hitachi transmission electron microscope.

**DNA analysis:** Genomic DNA was extracted with the Maxwell® 16 MDx Instrument (AS3000, Promega) from a 2 ml liquid culture with the Maxwell® 16 LEV Blood DNA kit (Promega, Charbonnières-les-Bains, France) including an initial lysis step as described by Fagervold *et al.* (2020). PCR targeting the 16S rRNA gene was performed with universal bacterial primers 27Fmod (5' AGRGTTTGATCMTGGCTCAG-3') (Eiler

& Bertilsson 2004) and 1492Rmod (5'-TACGGYTACCTTGTTAYGACTT-3') (Acinas *et al.* 2005). The thermal cycling program started at 94° C for 5 min, followed by 30 cycles of 94° C for 15 s, 50° C for 15 s and 72° C for 15 s, and by a final step of 72° C for 1.5 min. The PCR product was purified using a PCR clean up kit ExoSap IT (Applied Biosystems), and then sequenced using primers 907R (5'-CCGTCAATTCCTTTGAGTTT-3') and S8 (5'-GTAGCGGTGAAATGCGTAGA-3'), the BigDye Terminator Cycle Sequencing kit (Applied Biosystems) with an ABI Prism 3130xl automated DNA analyzer (Applied Biosystems).

DNA-DNA hybridization was carried out by the DSMZ Identification Service (Leibniz-Institut DSMZ-Deutsche Sammlung von Mikroorganismen und Zellkulturen GmbH, Braunschweig, Germany) to determine the level of relatedness between the strain LMB275<sup>T</sup> and the closest relative *A. parvum* DSM 11968<sup>T</sup>. After DNA purification by chromatography on hydroxyapatite according to Cashion *et al.* (1977), DNA-DNA hybridization was carried out in duplicate according to the thermal denaturation and renaturation method (De Ley *et al.* 1970, Huss *et al.* 1983) using a Cary spectrophotometer equipped with a Peltier temperature controller with an *in-situ* temperature probe (Varian).

DNA G+C % content was estimated from melting temperatures using the procedure described by Gonzalez & Saiz-Gimenez (2002), with slight modifications. Briefly, melting curves were realized for LMB275<sup>T</sup>, *A. commune* DSM 11901<sup>T</sup>, *A. citratiphilum* DSM 11900<sup>T</sup> and *A. parvum* DSM 11968<sup>T</sup> in 4 × 20  $\mu\text{l}$  replicates using 500 ng DNA, 1X Sybr Green I (Lonza) and 30 % formamide (Applied Biosystems). Total raw fluorescence at 4 channels was measured in a ramp from 25 to 100° C at 1° C.min<sup>-1</sup> using a StepOne plus (Thermo Fisher) real time PCR instrument, and T<sub>m</sub> estimated as the temperature where [fluorescence (T °C) – fluorescence (T °C – 1°C)] was maximal. Since the equation from Gonzalez & Saiz-Gimenez (2002) overestimated the values experimentally measured by Kalmbach *et al.* (1999), we estimated G+C % from a regression between measured T<sub>m</sub> and G+C reported by Kalmbach *et al.* (1999) for *A. commune* DSM 11901<sup>T</sup>, *A. citratiphilum* DSM 11900<sup>T</sup> and *A. parvum* DSM 11968<sup>T</sup>. The equation used was G+C = 0.2008 × T<sub>m</sub> + 51.977.

**Phylogenetic positioning:** The 16S rDNA gene sequence of strain LMB275<sup>T</sup> was compared to those in EzBioCloud (Yoon *et al.* 2017). Multiple sequence alignment was performed using the BioEdit software version 7.2.5 (Hall 1999). Phylogenetic trees were reconstructed using Bayesian inference (BI) and Maximum-likelihood (ML) methods, using a General Time Reversible model with a heterogeneous substitution rate parameter (Gamma) and a proportion of invariable sites, chosen with jModelTest (Darriba *et al.* 2012). Bayesian analysis was performed using MrBayes version 3.2.6 (Ronquist *et al.* 2012) and ML analyses were carried out using the Mega X software (Kumar *et al.* 2018b), validated with a bootstrap procedure based on 1000 replications. As the tree topologies from Bayesian and ML analyses were similar, only the BI tree is shown.

**Media and culture conditions:** The capacity of strain LMB275<sup>T</sup> to grow in different conditions was tested and compared to that of *Aquabacterium parvum* B6<sup>T</sup>, *Aquabacterium commune* B8<sup>T</sup>, and *Aquabacterium citratiphilum* B4<sup>T</sup> in the same experiment. The temperature range for growth was assessed on a series of modified R2A plates by replacing starch with 0.1 % (v/v) tween 80. The plates were incubated to temperature varying from 4° C to 45° C. NaCl tolerance was investigated using modified R2A broth with various NaCl concentrations (0 to 5 %, w/v). The pH range for growth (pH 5.0 to 10.0 with intervals of 1.0 pH units) was determined in modified R2A broth that was buffered with the appropriate quantity of MES (2- (N-Morpholino) ethanesulfonic acid, 4-Morpholineethanesulfonic acid) for pH 5.0, HEPES (N- (2-Hydroxyethyl) piperazine-N'-(2-ethanesulfonic acid) for pH 6.0 to 8.0, or AMPSO (N- (1,1-Dimethyl-2-hydroxyethyl)-3-amino-2-hydroxypropanesulfonic acid) for pH 9.0 and 10.0 (Sigma). The concentrations of bacterial cells in liquid cultures were regularly assessed with an ODSscanner (System-c bioprocess) during seven days.

The capacity of strains to grow at 30° C on nutrient-rich media was tested on Trypticase Soy Agar (TSA, Sigma) and on nutrient agar containing 3 g beef extract, 5 g peptone, 5 g NaCl, and 15 g agar per litre.

Growth under aerobic, anaerobic, microaerophilic, and under 5 % CO<sub>2</sub> conditions was determined on modified R2A agar using GENbag anaer, GENbag microaer, and GENbag CO<sub>2</sub> systems, respectively (BioMérieux) after incubating the strains for 2 days at 30° C.

**Electron acceptors:** The ability of strain LMB275<sup>T</sup> to reduce different inorganic electron acceptors in anaerobic condition (anaerobic chamber) was assessed in mineral deep agar medium (0.66 g (NH<sub>4</sub>)<sub>2</sub>SO<sub>4</sub>; 1.36 g KH<sub>2</sub>PO<sub>4</sub>; 0.123 g Mg SO<sub>4</sub>·7 H<sub>2</sub>O; 0.031 g CaCl<sub>2</sub> and 0.018 g Fe Cl<sub>2</sub> per litre) supplemented with 5 mM sodium acetate and one of the following compounds: 0.1 % (w/v) KNO<sub>3</sub>, 0.2 % (w/v) KNO<sub>2</sub>, 10 mM Na<sub>2</sub>SO<sub>4</sub>, 10 mM Na ClO<sub>3</sub> or 10 mM Fe(III)-citrate as electron acceptors (Kalmbach *et al.* 1999). Briefly, 0.2 ml of fresh liquid culture were inoculated in 10 ml in liquefied and tempered medium.

**Biochemical characteristics:** Cytochrome oxidase activity was determined with the Oxidase Reagent kit (BioMérieux, France) and catalase production was determined by using a 3 % (v/v) H<sub>2</sub>O<sub>2</sub> solution on colonies grown on modified R2A agar. Biochemical tests and assimilation of various substrates were investigated in triplicate using GEN III Microplates (Biolog Inc., CA, USA) and API 20NE kit (BioMérieux, France) according to the manufacturer's instructions. The cultures were grown for 24 h at 30° C in a modified R2A medium. For GEN III testing, cells were centrifuged and added to the inoculum medium until the OD of the culture corresponds to 45 % transmittance. The values 50 % above the negative control for the three experiments were regarded as positive. Enzyme activities were tested using API ZYM test kit according to the instructions of the manufacturer (BioMérieux, France).

**Chemotaxonomic characterization:** The chemotaxonomic characterization of the strain LMB275<sup>T</sup> was carried out by the Identification Service, Leibniz-Institut DSMZ-Deutsche Sammlung von Mikroorganismen und Zellkulturen GmbH (Braunschweig, Germany) using cells grown on modified R2A medium at 25° C and harvested after 1 day of growth by centrifugation. Whole-cell fatty acid composition was determined using Sherlock Microbial Identification System (MIDI; Sherlock version 6.1; TSBA 40 peak-naming table database). Peaks were automatically integrated and fatty acid names and percentages calculated by the MIS Standard Software (Microbial ID).

Polar lipids were extracted from freeze-dried cell material using a chloroform: methanol:0.3 % aqueous NaCl mixture (modified after Bligh & Dyer 1959) and were analyzed as described by Tindall *et al.* (2007).

**Sensitivity to antibiotics:** The sensitivity of bacterial strains to antibiotics was tested by the disc diffusion method after spreading cell suspensions (8.0 McFarland) on modified R2A agar plates. The antibiotics and their concentration used on filter-paper discs for the susceptibility assay are listed in the species definition. The effect of antibiotics on cell growth was assessed after 48 and 72 h at 30° C.

## RESULTS

Cell size of strain LMB275<sup>T</sup> is approximately 2.6 ± 0.2 µm in length and 0.6 ± 0.1 µm in width. They are motile straight rods, that mainly occurred as single cells, but can form cell aggregates as described for *A. parvum*, *A. commune*, and *A. citratiphilum* (Kalmbach *et al.* 1999). They possess a single polar flagellum as shown in Fig. 1A.

The presence of polyalkanoate and polyphosphate inclusion bodies was observed in bacterial cytoplasm as white and black globular structures respectively as well as extracellular fibrillar matrix material as has been already reported in many other species of the genus (Fig. 1B).

A nearly complete 16S rRNA gene sequence (1460 bp) of strain LMB275<sup>T</sup> was obtained (Genbank accession N°ON107272). Initial comparison of 16S rRNA gene sequence within the EzBioCloud online database assigned strain LMB275<sup>T</sup> into the genus *Aquabacterium* showed the highest sequence similarity with *A. parvum* DSM 11968<sup>T</sup> (99.1 %). The following closest phylogenetic neighbors of strain LMB275<sup>T</sup> were *A. commune* DSM 11901<sup>T</sup> and *A. citratiphilum* DSM 11900<sup>T</sup> with 97.9 and 97.0 % similarities respectively. The relationship of strain LMB275<sup>T</sup> with all members of the genus *Aquabacterium* was also supported by the phylogenetic analysis based on 16S rRNA sequence and including gene sequences of all validly published *Aquabacterium* species. This analysis confirmed *A. parvum* as the closest phylogenetic neighbor of LMB275<sup>T</sup> and showed that they formed together a unique lineage strongly supported by bootstrap value and

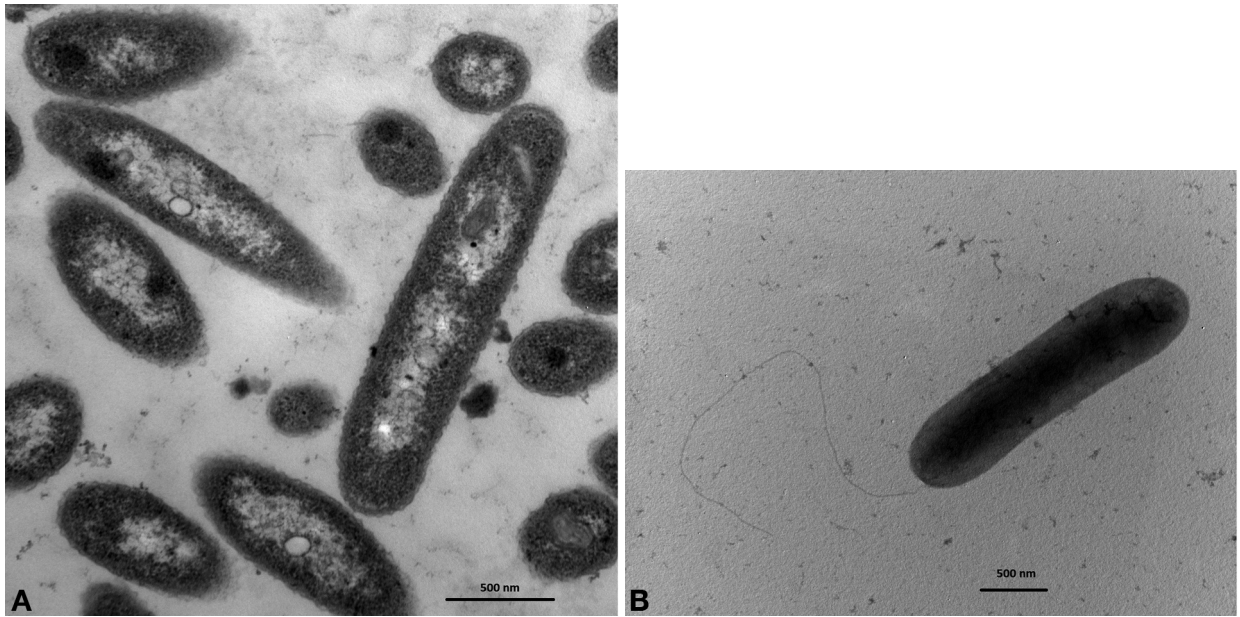


Fig. 1. – Transmission electron micrograph (A) of negatively stained cells of strain LMB275<sup>T</sup>, showing the polar flagellum. (B) of a thin section of cell showing polyalkanoate (white) and polyphosphate (black) inclusion bodies.

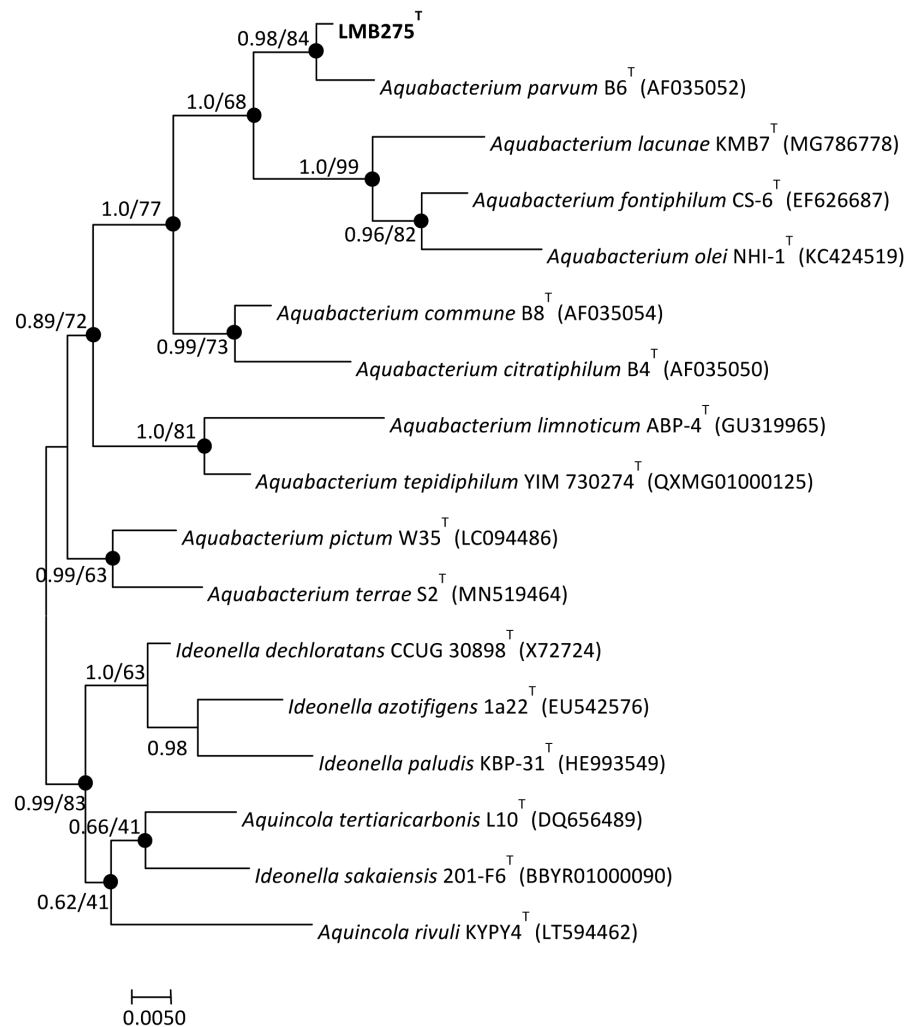


Fig. 2. – Phylogenetic tree based on the Bayesian analysis of 16S rRNA gene sequences showing the relationships of strain LMB275<sup>T</sup> with the related *Aquabacterium* species. Genbank accession numbers are indicated in parentheses. Numbers are posterior probabilities / bootstrap support values in %. Bar: 0.005 substitution per nucleotide position.

Table I. – Phenotypic and genotypic characteristics that can be used to distinguish strain LMB275<sup>T</sup> and members of phylogenetically related genera. Strains: 1, strain LMB275<sup>T</sup>; 2, *A. parvum* DSM 11968<sup>T</sup>; 3, *A. commune* DSM 11901<sup>T</sup>; 4, *A. citratiphilum* DSM 11900<sup>T</sup>. \* Data from Kalmbach *et al.* (1999). All strains are positive for reduction of nitrate,  $\beta$ -glucosidase activity, and assimilation of methyl pyruvate, tween 40, and  $\beta$ -hydroxy-D, L-butyric acid. All strains are negative for indole production, glucose fermentation, arginine dihydrolase, protease, and  $\beta$ -galactosidase activities, assimilation of dextrin, D-Maltose, D-trehalose, D-cellobiose, gentiobiose, sucrose, D-turanose, stachyose, D-raffinose,  $\alpha$ -D-lactose, D-melibiose,  $\beta$ -methyl-D-glucoside, D-salicin, N-acetyl-D-glucosamine, N-acetyl- $\beta$ -D-mannosamine, N-acetyl-D-galactosamine, N-acetyl neuraminic acid,  $\alpha$ -D-glucose, D-mannose, D-fructose, D-galactose, 3-methyl glucose, L-fucose, L-rhamnose, inosine, D-sorbitol, D-mannitol, D-arabitol, myo-inositol, D-glucose-6-PO<sub>4</sub>, D-fructose-6-PO<sub>4</sub>, D-aspartic acid, D-serine, gelatin, glycyl-L-proline, L-alanine, L-arginine, L-aspartic acid, L-glutamic acid, L-histidine, L-pyroglutamic acid, L-serine, pectin, D-galacturonic acid, L-galactonic acid lactone, D-gluconic acid, D-glucuronic acid, mucic acid, quinic acid, D-saccharic acid, p-hydroxy-phenylacetic acid, D-lactic acid methyl ester,  $\alpha$ -keto-glutaric acid, D-malic acid,  $\gamma$ -amino-butyric acid,  $\alpha$ -Hydroxy-butyric acid,  $\alpha$ -keto-butyric acid, and formic acid.

	1	2	3	4
Isolation source	Deep aquifer	Drinking water system	Drinking water system	Drinking water system
Accumulation of PHB	+	+	+	+
Growth at 45 °C	+	–	–	–
Growth at pH 6.0	+	–	–	+
Growth at pH 10.0	+	+	–	+
NaCl concentration (% w/v)	0	0–1	0–4	0–4
Colony on TSA	+	+	–	+
Colony on Nutrient Agar	+	–	+	–
Assimilation of:				
D-fucose	–	–	+	–
Glycerol	–	–	–	+
Glucuronamide	+	–	+	–
L-Lactic acid	–	+	–	+
Citric acid	–	–	–	+
L-Malic acid	+	–	+	+
Bromo-Succinic acid	+	–	–	+
Acetoacetic acid	+	–	+	–
Propionic acid	+	–	–	+
DNA G+C content (mol%)	66	65	66	66

that distinguished them from other members of the *Aquabacterium* genus (Fig. 2). The same result was obtained in all the implemented phylogenetic algorithms.

The DNA-DNA hybridization value was 47.3 % DNA-DNA similarity (39.7 % for duplicate), far below the threshold value of 70 % recommended for the definition of bacterial species and thus clearly indicating that strain LMB275<sup>T</sup> does not belong to the closest phylogenetic relative species *A. parvum*. The estimated G+C % for LMB275<sup>T</sup> was 66 % (Table I).

The strain grew optimally at 30-37 °C, pH 7.0 and with no NaCl but was able to grow between 10 to 45 °C (but not 4 °C), between 6.0 to 10.0 pH units, and was not able to grow in all other NaCl concentrations tested. Colonies of the strain LMB275<sup>T</sup> formed onto Trypticase Soy Agar and nutrient agar but were not observed on nutrient agar for *A. parvum* B6<sup>T</sup> and *A. citratiphilum* B4<sup>T</sup>, and on TSA for *A. commune* B8<sup>T</sup>. Weak growth was observed with 5 % CO<sub>2</sub>, and no growth occurred under anaerobic conditions. Strain LMB275<sup>T</sup> grew using nitrate, chlorate, sulfate and iron (III), but no reduction of nitrite was observed.

The physiological and genomic characteristics of strain LMB275<sup>T</sup> compared to its closest phylogenetic relatives *A. parvum*, *A. commune* and *A. citratiphilum* are summarized in Table I.

The predominant cellular fatty acid was C<sub>18:1</sub>  $\omega$ 9c (33.9 %), C<sub>16:0</sub> (21.7 %), and summed feature 3 (16.9 %) comprised of 16:1  $\omega$ 7c and/or C<sub>16:1</sub>  $\omega$ 6c (Table II). The profile strongly differs from those reported for the closest phylogenetic relatives *A. parvum*, *A. commune* and *A. citratiphilum* as C<sub>18:1</sub>  $\omega$ 9c represented a minor part when detected in these strains. The polar lipid profile consisted of a mixture of phosphatidylethanolamine as the major component, phosphatidylglycerol, diphosphatidylglycerol and several uncharacterized phospholipids.

In summary, strain LMB275<sup>T</sup> distinguished from the related species of the genus *Aquabacterium* by its physiological and biochemical characteristics as well as by its phylogenetic position and DNA-DNA relatedness. Therefore, we suggest that strain LMB275<sup>T</sup> represents a novel species of the genus *Aquabacterium*, for which we propose the name *Aquabacterium silicae* sp. nov.

Table II. – Fatty acid composition (%) of LMB275<sup>T</sup> and members of the closest phylogenetically related species of the genus *Aquabacterium*. Strains: 1, strain LMB275<sup>T</sup>; 2, *A. parvum* DSM 11968<sup>T</sup>; 3, *A. commune* DSM 11901<sup>T</sup>; 4, *A. citratiphilum* DSM 11900<sup>T</sup>. Values are percentage of the total fatty acids. Fatty acids with values of less than 1.0% are indicated by “–”. Data from Chen *et al.* (2012). \*\* Summed Feature are groups of two or three fatty acids that cannot be separated by GLC using the MIDI system. Summed Feature 3 comprises C16:1 ω7c and/or C16:1 ω6c. Summed Feature 8 comprises C18:1 ω7c and/or C18:1 ω6c.

	1	2 <sup>*</sup>	3 <sup>*</sup>	4 <sup>*</sup>
C <sub>10:0</sub>	–	2.0	–	2.3
C <sub>12:0</sub>	4.3	3.3	5.6	3.4
C <sub>14:0</sub>	–	4.1	1.9	3.9
C <sub>16:0</sub>	21.7	21.3	31.0	19.0
C <sub>18:0</sub>	–	7.8	1.6	2.0
C <sub>10:0</sub> 3-OH	4.8	6.8	5.8	7.8
C <sub>12:0</sub> 2-OH	1.9	2.4	1.5	2.7
C <sub>16:1</sub> ω9c	7.5	–	–	–
C <sub>18:1</sub> ω7c	6.8	18.2	8.8	20.1
C <sub>18:1</sub> ω9c	<b>33.9</b>	1.4	–	1.2
**Summed In Feature 3	16.9	30.4	42.4	35.0
**Summed In Feature 8	6.8	–	–	–

### Description of *Aquabacterium silicae* sp. nov.

*Aquabacterium silicae* (si.li'caea. L. gen. n. of silex, as the type strain was isolated from a siliceous environment).

Cells are rod-shaped, aerobic and microaerophile, chemo-heterotrophic, motile using a single polar flagellum. Cells are approximately 2.6 ± 0.2 μm long and 0.6 ± 0.1 μm wide. Cells grown on modified R2A medium form 0.5 mm diameter colonies, white in the center and transparent at the edge. Accumulation of poly-β-hydroxybutyrate and polyphosphate is observed. Grows well on modified R2A, TSA and Nutrient Agar. On modified R2A media, colonies are circular, convex, and 0.5 mm in diameter after 48 h of aerobic incubation at 30° C. Growth occurs in the temperature range 10–45° C, with no NaCl and at a pH ranging from 6 to 10. Optimum growth occurs at 30–37° C, pH 7 with no NaCl. The bacterial strain exhibits positive oxidase and no catalase activities. Nitrate, chlorate, sulfate and iron (III) can be used as the electron acceptor for anaerobic respiration, but not nitrite.

In API 20NE tests, reduction of nitrate, urea hydrolysis, β-glucosidase activity, and assimilation of malate are positive. Negative for indole production, glucose fermentation, arginine dihydrolase, protease, β-galactosidase activities, and assimilation of D-glucose, L-arabinose, D-mannose, D-mannitol, N-acetyl-glucosamine, D-maltose, gluconic acid, capric acid, adipic acid, citric acid and phenyl-acetic acid. Utilization of carbon sources using Biolog GEN III Microplate test panels shows positive reactions for glucuronamide, methyl pyruvate, L-malic

acid, bromo-succinic acid, tween 40, β-hydroxy-D,L-butyric acid, acetoacetic acid, propionic acid, acetic acid. It is negative for dextrin, D-Maltose, D-trehalose, D-cellobiose, gentiobiose, sucrose, D-turanose, stachyose, D-raffinose, α-D-lactose, D-melibiose, β-methyl-D-glucoside, D-salicin, N-acetyl-D-glucosamine, N-acetyl-β-D-mannosamine, N-acetyl-D-galactosamine, N-acetylneuraminic acid, α-D-glucose, D-mannose, D-fructose, D-galactose, 3-methyl glucose, D-fucose, L-fucose, L-rhamnose, inosine, D-sorbitol, D-mannitol, D-arabitol, myo-inositol, glycerol, D-glucose-6-PO<sub>4</sub>, D-fructose-6-PO<sub>4</sub>, D-aspartic acid, D-serine, gelatin, glycyl-L-proline, L-alanine, L-arginine, L-aspartic acid, L-glutamic acid, L-histidine, L-pyroglytamic acid, L-serine, pectin, D-galacturonic acid, L-galactonic acid lactone, D-gluconic acid, D-glucuronic acid, mucic acid, quinic acid, D-saccharic acid, p-hydroxy-phenylacetic acid, D-lactic acid methyl ester, L-lactic acid, citric acid, α-keto-glutaric acid, D-malic acid, γ-amino-butyric acid, α-hydroxy-butyric acid, α-keto-butyric acid, formic acid. In API ZYM assays, positive for alkaline phosphatase, esterase, esterase lipase, leucine arylamidase, acid phosphatase and naphthol-AS-BI-phosphatase. Negative for lipase, valine arylamidase, cysteine arylamidase, trypsin and α-chymotrypsin.

Resistant to cefotaxim (30 μg), polymixin B (300 UI), ampicillin (10 μg), penicillin (10 UI) and amoxicillin (30 μg) and sensitive to chloramphenicol (30 μg), ciprofloxacin (5 μg), vancomycin (30 μg), rifampicin (30 μg), imipenem (10 μg), ofloxacin (5 μg), kanamycin (30 μg), tetracyclin (30 μg), erythromycin (15 μg), streptomycin (10 μg).

The major components of cellular fatty acids are C<sub>18:1</sub> ω9c, C<sub>16:0</sub>, and summed feature 3 (C<sub>16:1</sub> ω7c and/or C<sub>16:1</sub> ω6c). The major polar lipid is phosphatidylethanolamine. The G+C content of genomic DNA is 66 %.

The type strain is LMB275<sup>T</sup> (= CNCM I-5858), which was isolated from a deep aquifer located in the Cévennes mountains (France).

ACKNOWLEDGEMENTS. – We acknowledge ML Escande (BioPIC platform, Observatoire Océanologique de Banyuls/Mer, France) for Transcription Electron Microscopy.

We are grateful to the Bio2Mar platform (Observatoire Océanologique de Banyuls/Mer, France; <http://bio2mar.obs-banyuls.fr>) for providing access to instrumentation.

This work was supported by the joint research team between Sorbonne University and the Centre National de la Recherche Scientifique to Pierre Fabre Laboratories.

### REFERENCES

- Acinas SG, Sarma-Rupavtarm R, Klepac-Ceraj V, Polz MF 2005. PCR-induced sequence artifacts and bias: insights from comparison of two 16S rRNA clone libraries constructed from the same sample. *Appl Environ Microbiol* 71: 8966–8969. <https://doi.org/10.1128/AEM.71.12.8966-8969.2005>

- Bligh EG, Dyer WJ 1959. A rapid method of total lipid extraction and purification. *Can J Biochem Physiol* 37: 911-7. <https://doi.org/10.1139/o59-099>
- Bourrain M, Villette C, Nguyen T, Lebaron P 2012. *Aquaphilus dolomiae* gen. nov., sp. nov., isolated from a deep aquifer. *Vie Milieu* 62: 191-195.
- Bourrain M, Suzuki MT, Calvez A, West N, Lions J, Lebaron P 2020. In-depth prospection of Avène Thermal Spring Water reveals an uncommon and stable microbial community. *J Eur Acad Dermatol Venereol* 34: 8-14. <https://doi.org/10.1111/jdv.16599>
- Cashion P, Hodler-Franklin MA, McCully J, Franklin M 1977. A rapid method for base ratio determination of bacterial DNA. *Anal Biochem* 81: 461-466. [https://doi.org/10.1016/0003-2697\(77\)90720-5](https://doi.org/10.1016/0003-2697(77)90720-5)
- Chen WM, Cho NT, Yang SH, Arun AB, Young CC, Sheu SY 2012. *Aquabacterium limnoticum* sp. nov., isolated from a freshwater spring. *Int J Syst Evol Microbiol* 62: 698-704. <https://doi.org/10.1099/ijs.0.030635-0>
- Chen WM, Chen TY, Kwon SW, Sheu SY 2020. *Aquabacterium lacunae* sp. nov., isolated from a freshwater pond. *Int J Syst Evol Microbiol* 70: 2888-2895. <https://doi.org/10.1099/ijs.0.004117>
- Dahal RH, Han JY, Lee H, Chaudhary DK, Kim DU 2021. *Aquabacterium terrae* sp. nov., isolated from soil. *Arch Microbiol* 203: 3183-3189. <https://doi.org/10.1007/s00203-021-02269-8>
- Darriba D, Taboada GL, Doallo R, Posada D 2012. jModelTest 2: more models, new heuristics and parallel computing. *Nat Methods* 9: 772. <https://doi.org/10.1038/nmeth.2109>
- De Ley J, Cattoir H, Reynaerts A 1970. The quantitative measurement of DNA hybridization from renaturation rates. *Eur J Biochem* 12: 133-142. <https://doi.org/10.1111/j.1432-1033.1970.tb00830.x>
- Derelle E, Ferraz C, Escande ML, Eychenié S, Cooke R, Pignaneu G, Desdevises Y, Bellec L, Moreau H, Grimsley N 2008. Life-cycle and genome of OtV5, a large DNA virus of the pelagic marine unicellular green alga *Ostreococcus tauri*. *PLOS ONE* 3(5): e2250. <https://doi.org/10.1371/journal.pone.0002250>
- Eiler A, Bertilsson S 2004. Composition of freshwater bacterial communities associated with cyanobacterial blooms in four Swedish lakes. *Environ Microbiol* 6: 1228-1243. <https://doi.org/10.1111/j.1462-2920.2004.00657.x>
- Fagerbold SK, Rohée C, Rodrigues AMS, Stien D, Lebaron P 2020. Efficient degradation of the organic UV filter benzophenone-3 by *Sphingomonas wittichii* strain BP14P isolated from WWTP sludge. *Sci Total Environ* 758. <https://doi.org/10.1016/j.scitotenv.2020.143674>
- Fukuda A, Hagiwara H, Ishimura T, Kouduka M, Ioka S, Amano Y, Tsunogai U, Suzuki Y, Mizuno T 2010. Geomicrobiological properties of ultra-deep granitic groundwater from the Mizunami Underground Research Laboratory (MIU), central Japan. *Microb Ecol* 60: 214-225. <https://doi.org/10.1007/s00248-010-9683-9>
- Gonzalez JM, Saiz-Jimenez 2002. A fluorimetric method for the estimation of G+C mol % content in microorganisms by thermal denaturation temperature. *Environ Microbiol* 11: 770-773. <https://doi.org/10.1046/j.1462-2920.2002.00362.x>
- Griebler C, Lueders T 2009. Microbial biodiversity in groundwater ecosystems. *Freshw Biol* 54: 649-677. <https://doi.org/10.1111/j.1365-2427.2008.02013.x>
- Hall TA 1999. BioEdit: a user-friendly biological sequence alignment editor and analysis program for Windows 95/98/NT. *Nucl Acids Symp Ser* 41: 95-98.
- Hirose S, Tank M, Hara E, Tamaki H, Mori K, Takaichi S, Haruta S, Hanada S 2020. *Aquabacterium pictum* sp. nov., the first aerobic bacteriochlorophyll a-containing fresh water bacterium in the genus *Aquabacterium* of the class Betaproteobacteria. *Int J Syst Evol Microbiol* 70: 596-603. <https://doi.org/10.1099/ijs.0.003798>
- Hoehler T, Jørgensen B 2013. Microbial life under extreme energy limitation. *Nat Rev Microbiol* 11: 83-94. <https://doi.org/10.1038/nrmicro2939>
- Huss VAR, Festl H, Schleifer KH 1983. Studies on the spectrophotometric determination of DNA hybridization from renaturation rates. *Syst Appl Microbiol* 4: 184-192. [https://doi.org/10.1016/S0723-2020\(83\)80048-4](https://doi.org/10.1016/S0723-2020(83)80048-4)
- Ino K, Konno U, Kouduka M, Hirota A, Togo YS, Fukuda A, Komatsu D, Tsunogai U, Tanabe AS, Yamamoto S, Iwatsuki T, Mizuno T, Ito K, Suzuki Y 2016. Deep microbial life in high-quality granitic groundwater from geochemically and geographically distinct underground boreholes. *Environ Microbiol* 8: 285-94. <https://doi.org/10.1111/1758-2229.12379>
- Kalmbach S, Manz W, Wecke J, Szewzyk U 1999. *Aquabacterium* gen. nov., with description of *Aquabacterium citratiphilum* sp. nov., *Aquabacterium parvum* sp. nov. and *Aquabacterium commune* sp. nov., three *in situ* dominant bacterial species from the Berlin drinking water system. *Int J Syst Bacteriol* 2: 769-77. <https://doi.org/10.1099/00207713-49-2-769>
- Khan IU, Habib N, Asem MD, Salam N, Xiao M, Zhou EM, Zhi XY, Li WJ 2019. *Aquabacterium tepidiphilum* sp. nov., a moderately thermophilic bacterium isolated from a hot spring. *Int J Syst Evol Microbiol* 69: 337-342. <https://doi.org/10.1099/ijs.0.003103>
- Konno U, Kouduka M, Komatsu DD, Ishii K, Fukuda A, Tsunogai U, Ito K, Suzuki Y 2013. Novel microbial populations in deep granitic groundwater from Grimsel Test Site, Switzerland. *Microb Ecol* 65: 626-37. <https://doi.org/10.1007/s00248-013-0184-5>
- Kumar S, Herrmann M, Blohm A, Hilke I, Frosch T, Trumbore SE, Küsel K 2018a. Thiosulfate- and hydrogen-driven autotrophic denitrification by a microbial consortium enriched from groundwater of an oligotrophic limestone aquifer. *FEMS Microbiol Ecol* 94(10). <https://doi.org/10.1093/femsec/fiy141>
- Kumar S, Stecher G, Li M, Knyaz C, Tamura K 2018b. MEGA X: Molecular evolutionary genetics analysis across computing platforms. *Mol Biol Evol* 35: 1547-1549. <https://doi.org/10.1093/molbev/msy096>
- Lesaulnier CC, Herbold CW, Pelikan C, Berry D, Gérard C, Le Coz X, Gagnot S, Niggemann J, Dittmar T, Singer GA, Loy A 2017. Bottled aqua incognita: microbiota assembly and dissolved organic matter diversity in natural mineral waters. *Microbiome* 5: 126. <https://doi.org/10.1186/s40168-017-0344-9>
- Lin MC, Jiang SR, Chou JH, Arun AB, Young CC, Chen WM 2009. *Aquabacterium fontiphilum* sp. nov., isolated from spring water. *Int J Syst Evol Biol* 59: 681-685. <https://doi.org/10.1099/ijs.0.000745-0>
- Lions J 2020. Hydrochemistry of Avène thermal waters (Avènes-Bains, France). *J Eur Acad Dermatol Venereol* 34: 4-7. <https://doi.org/10.1111/jdv.16336>
- Lopez-Fernandez M, Simone D, Wu X 2018. Metatranscriptomes reveal that all three domains of life are active but are dominated by bacteria in the Fennoscandian crystalline granitic continental deep biosphere. *mBio* 9: e01792-18. <https://doi.org/10.1128/mbio.01792-18>

- Pham VHT, Jeong SW, Kim J 2015. *Aquabacterium olei* sp. nov., an oil-degrading bacterium isolated from oil-contaminated soil. *Int J Syst Evol Microbiol* 65: 3597-3602. <https://doi.org/10.1099/ijsem.0.000458>
- Raguénès G, Christen R, Guezennec J, Pignet P, Barbier G 1997. *Vibrio diabolicus* sp. nov., a new polysaccharide-secreting organism isolated from a deep-sea hydrothermal vent polychaete annelid, *Alvinella pompejana*. *Int J Syst Bacteriol* 47: 989-95. <https://doi.org/10.1099/00207713-47-4-989>
- Reasoner DJ, Geldreich EE 1985. A new medium for the enumeration and subculture of bacteria from potable water. *Appl Environ Microbiol* 49: 1-7. <https://doi.org/10.1128/aem.49.1.1-7.1985>
- Ronquist F, Teslenko M, van der Mark P, Ayres DL, Darling A, Höhna S, Larget B, Liu L, Suchard MA, Huelsenbeck JP 2012. MrBayes 3.2: efficient Bayesian phylogenetic inference and model choice across a large model space. *Syst Biol* 61(3): 539-542. <https://doi.org/10.1093/sysbio/sys029>
- Savio D, Stadler P, Reischer GH, Kirschner AKT, Demeter K, Linke R, Blaschke AP, Sommer R, Szewzyk U, Wilhartitz IC, Mach RL, Stadler H, Farnleitner AH 2018. Opening the black box of spring water microbiology from alpine karst aquifers to support proactive drinking water resource management. *WIREs Water* 5: e1282. <https://doi.org/10.1002/wat2.1282>
- Tindall BJ, Sikorski J, Smibert RM, Kreig NR 2007. Phenotypic characterization and the principles of comparative systematics. In Reddy CA, Beveridge TJ, Breznak JA, Marzluf GA, Schmidt TM, Snyder LR (Eds), *Methods for General and Molecular Microbiology* 3<sup>e</sup> ed. Wilye: 330-393. <https://doi.org/10.1128/9781555817497.ch15>
- Wu X, Holmfeldt K, Hubalek V, Lundin D, Åström M, Bertilsson S, Dopson M 2016. Microbial metagenomes from three aquifers in the Fennoscandian shield terrestrial deep biosphere reveal metabolic partitioning among populations. *ISME J* 10: 1192-1203. <https://doi.org/10.1038/ismej.2015.185>
- Yoon SH, Ha SM, Kwon S, Lim J, Kim Y, Seo H, Chun J 2017. Introducing EzBioCloud: a taxonomically united database of 16S rRNA and whole genome assemblies. *Int J Syst Evol Microbiol* 67: 1613-1617. <https://doi.org/10.1099/ijsem.0.001755>

Received on May 2, 2023

Accepted on July 11, 2023

Associate editor : P Galand